

EJC Community Centers

Supporting Alachua County
Families with C.A.R.E.

EJC Community Centers

Counseling



Activities



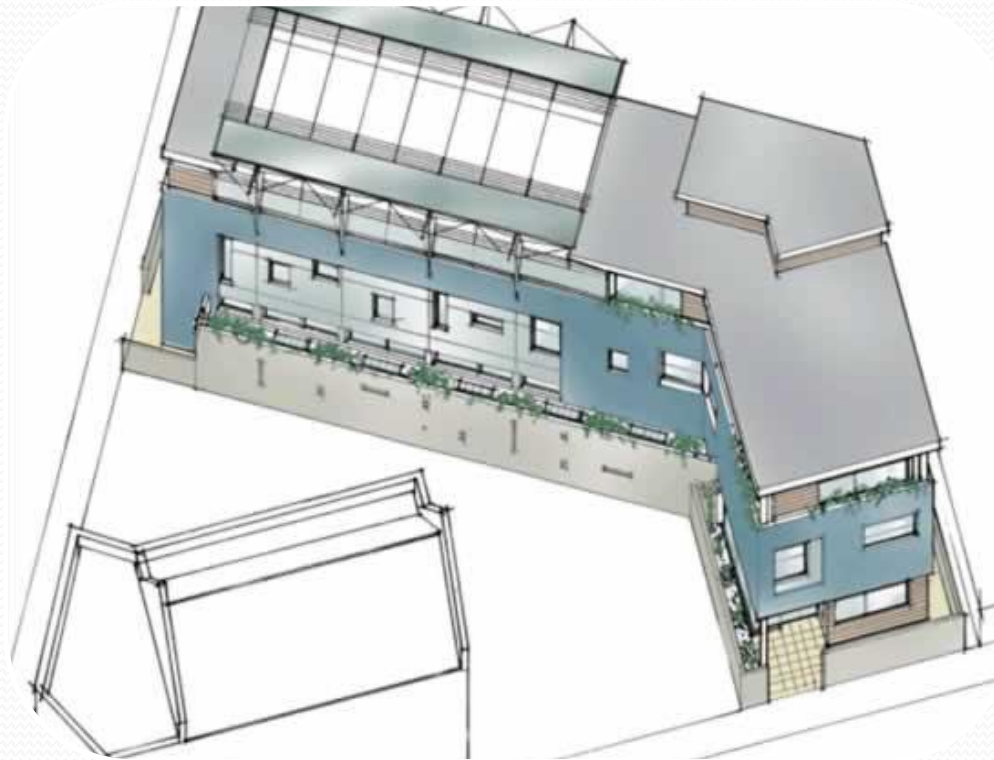
Renewal



Education



EJC Community Centers



Newberry

Alachua/
High
Springs

Gainesville

EJC Community Centers

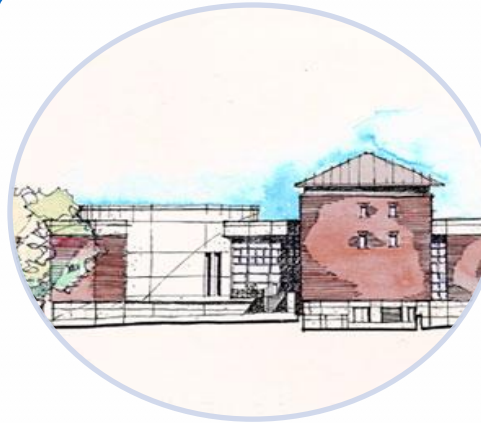


Learning
Facilities

22,000 Sq. Ft. Facility



Residence &
Counseling



Recreation Areas

EJC Community Centers

Why build them?

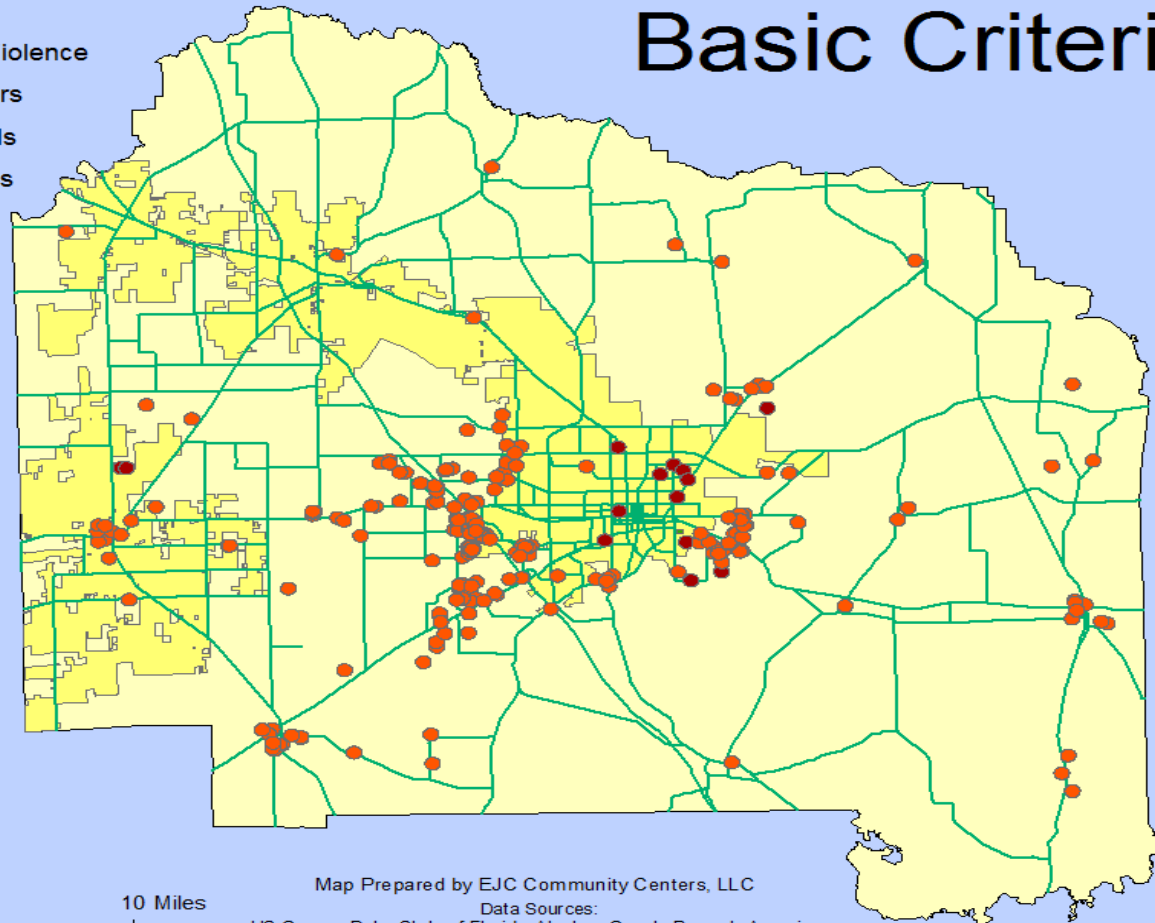
- Provide opportunities
 - Create a safe learning environment for children, teens, and adults
 - Counseling services
 - Recreation activities (e.g., aesthetic, music, sports, outdoors)
- Violence and crime rates high
 - Over 2,000 cases of domestic violence and “violent” crimes in 2009
 - Over 5,000 total cases of crime in 2009
 - An average of 400 child neglect cases occur every year
 - Objective: provide a “safe haven” for individuals to go to
- Poverty levels high
 - Over 21% of Alachua County residents fall under the Federal Poverty Level
 - About 3% of them do not have a place to call “home”

EJC Community Centers

Legend

-  Domestic Violence
-  Sexoffenders
-  Major Roads
-  Target Cities

Basic Criteria



Map Prepared by EJC Community Centers, LLC

Data Sources:

US Census Data; State of Florida; Alachua County Property Appraiser

EJC Community Centers

Criteria – Where, Who, and What should we target?

- Cover the bases: a center in Newberry, Alachua/ High Springs, and Gainesville
- Located in areas where accessibility is high (e.g., near major roads, bus routes, etc.)
- Located in areas with financial necessity
- Located in areas associated with crime and child neglect
- Children classification:
M,F 15 and under



EJC Community Centers

Proximity

- Areas close to home but far from danger
- Crime breeds more crime
(Environment)
- Away from home abuse but not in the arms of a stranger (domestic violent neighbors)
- Away from home abuse but not in the arms of a predator (sex offenders)



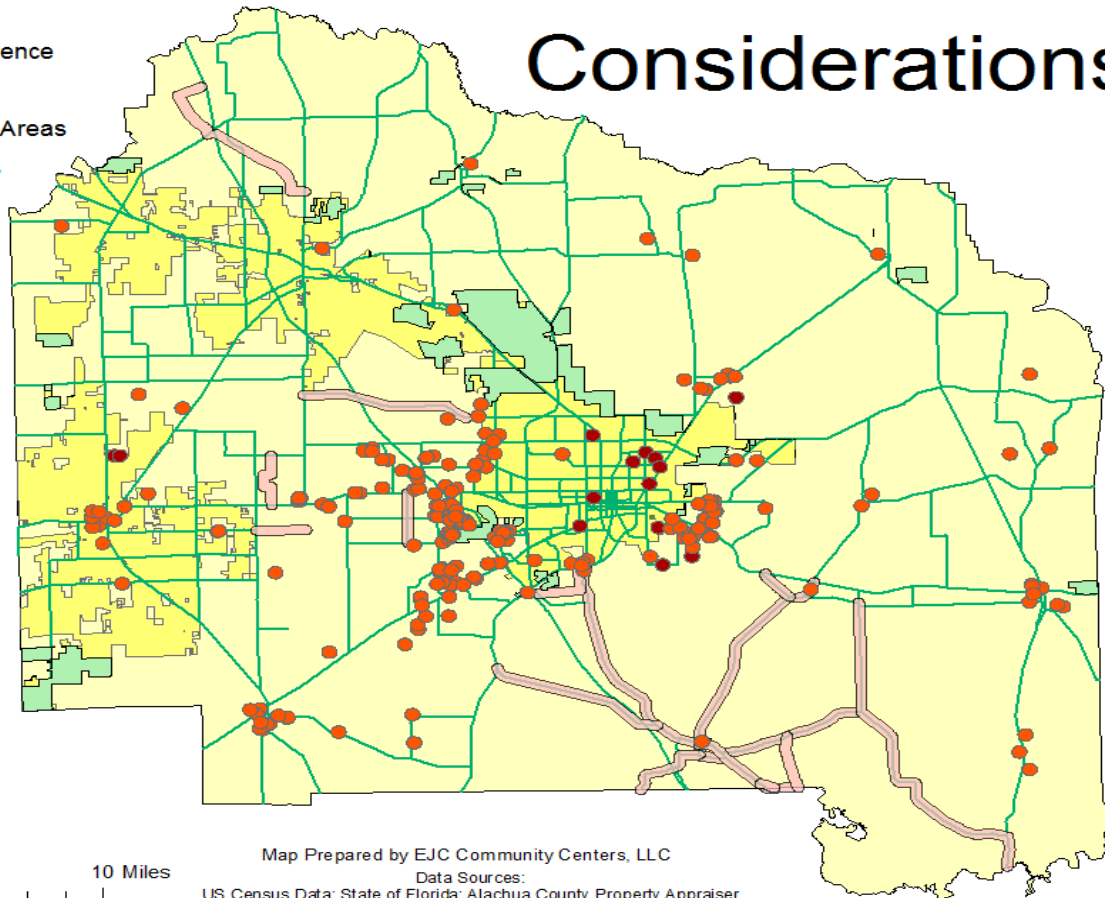
**NEIGHBORHOOD
SAFETY ZONE**

EJC Community Centers

Considerations

Legend

- Domestic Violence
- Sexoffenders
- Conservation Areas
- Scenic Roads
- Target Cities
- Major Roads



Map Prepared by EJC Community Centers, LLC
Data Sources:
US Census Data; State of Florida; Alachua County Property Appraiser

EJC Community Centers

Conservation Areas

- Reasoning: ensure that these areas remain protected and undeveloped
- How?
 - Ensure that all conservation areas are selected as areas to avoid construction
 - Created a buffer surrounding each conservation area so that development activities did not “spillover” into protected areas



EJC Community Centers

Buffers

- Historic Structures
- Scenic Roadways (people want to look at trees, not buildings – nature is still the best architect)
- Bus stops (do you know any kids who like walking?)

EJC Community Centers

Historic Structures

- Distances – 500, 1000, 1500?
 - Nearby building does nothing to taint a historic structure.
 - No need to really limit ourselves
 - 500 ft buffer it is.



EJC Community Centers

Scenic Roadways

- A building **WOULD** taint a scenic roadway.
 - Bikers and runners often like the appearance of pristine wilderness around them.
 - Respect these roadways
 - Large buffer – 1000 ft.



EJC Community Centers

Bus Stops

- Important – we don't want to make young kids walk a long distance.
 - Dangerous
 - We're trying to keep kids from getting abused, not sit them on the sidewalk with a sign that says "kidnap me"
 - Inconvenient
 - Easy Walking Distance
 - 1500ft



EJC Community Centers

Physical Site Selection

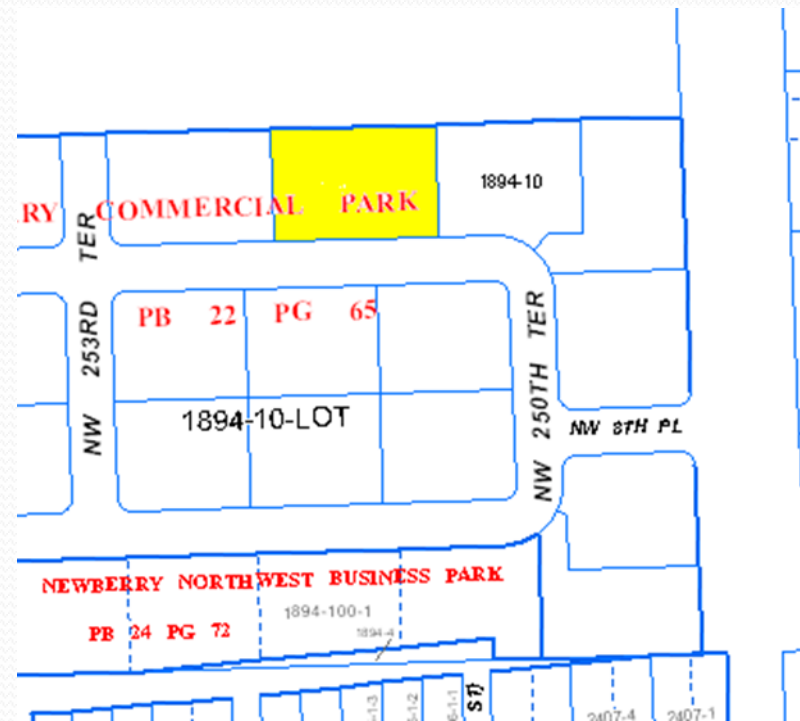
- 1.1+ Acres
- Commercially Zoned
- Normal Topography
- Easy Access

THREE ACCEPTABLE SITES SELECTED

EJC Community Centers

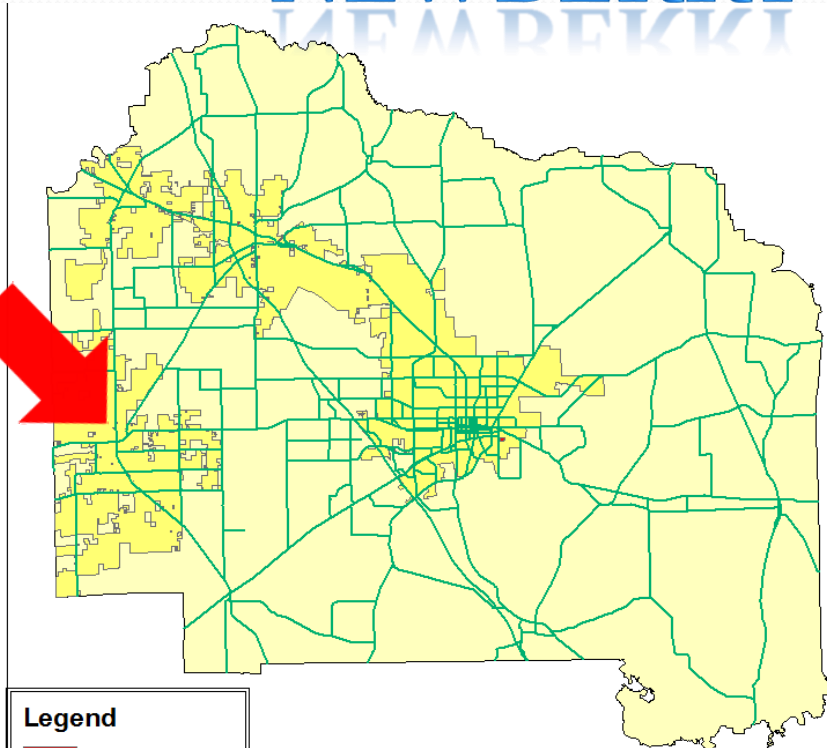
NEWBERRY

- NW 250th Terrace, Newberry, FL.
- 1.2 Acres
- Current Owner: Charles Perry Construction, Inc.






EJC Community Centers

NEWBERRY



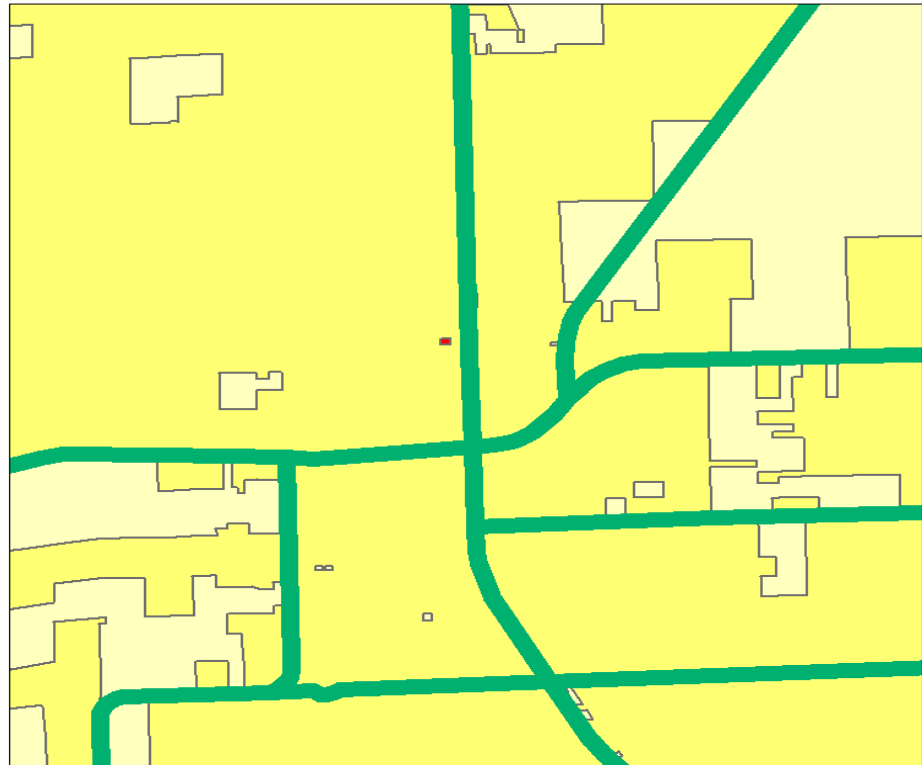
Legend

-  Selected Parcels
-  Major Roads
-  Target Cities






Data Sources:
US Census Data; State of Florida; Alachua County Property Appraiser
Map Prepared by EJC Community Centers, LLC

0 3 6 12 Miles



Legend

-  Selected Parcels
-  Major Roads
-  Target Cities



Data Source:
Alachua County Property Appraiser

Map Prepared by EJC Community Centers, LLC

0 0.35 0.7 1.4 Miles

EJC Community Centers

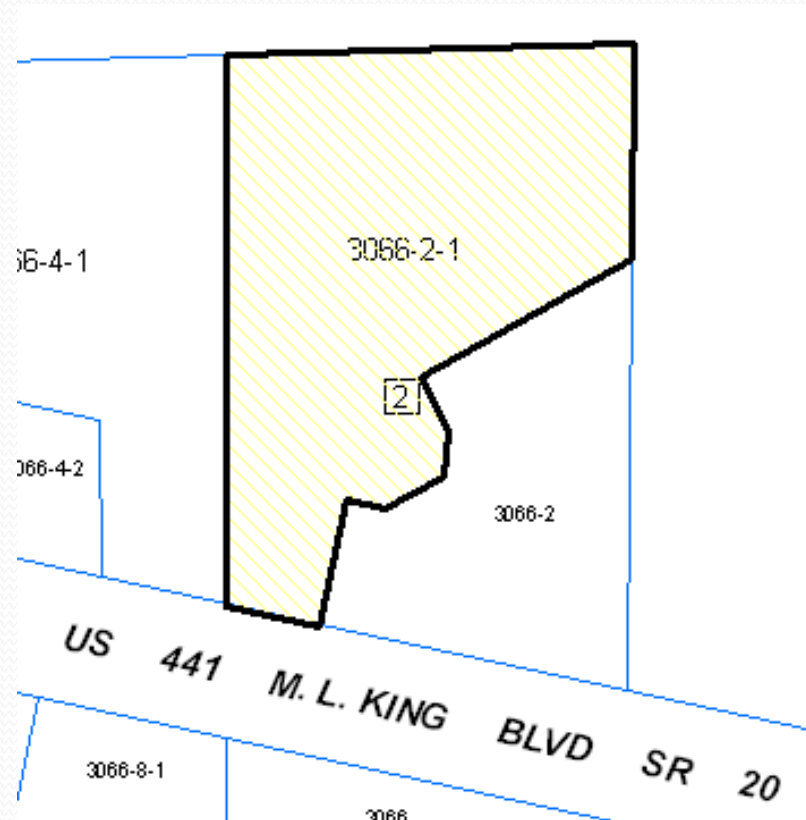
NEWBERRY



EJC Community Centers

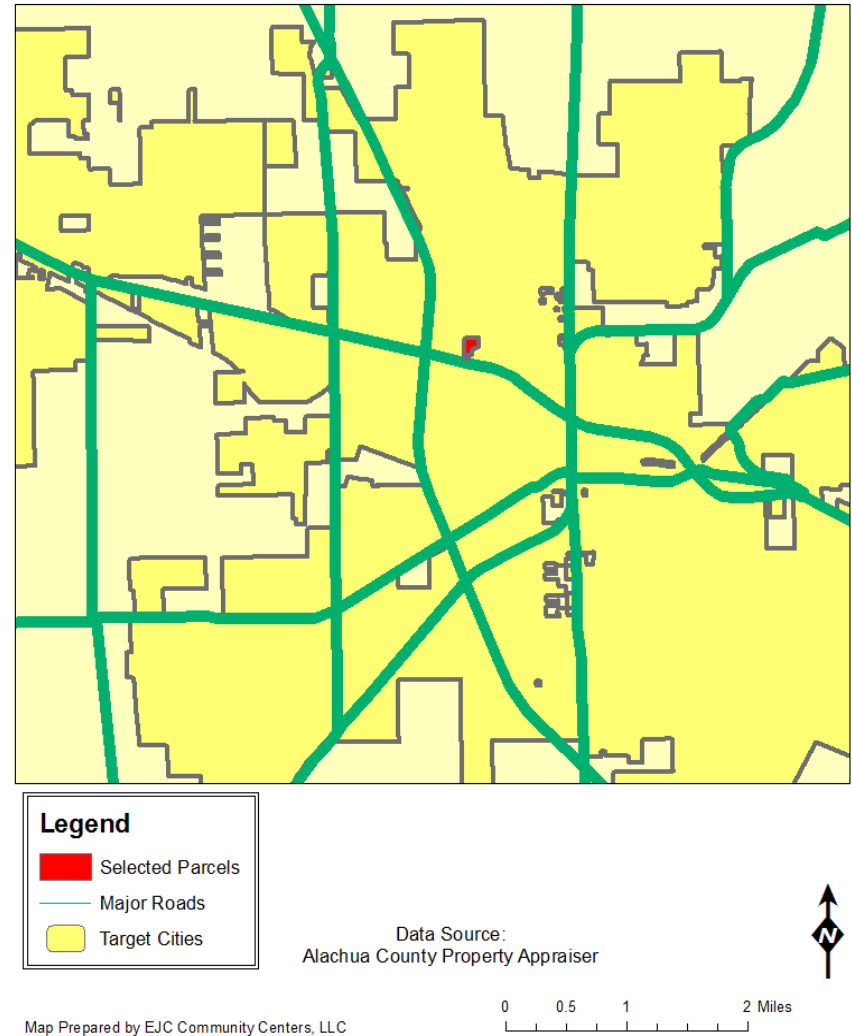
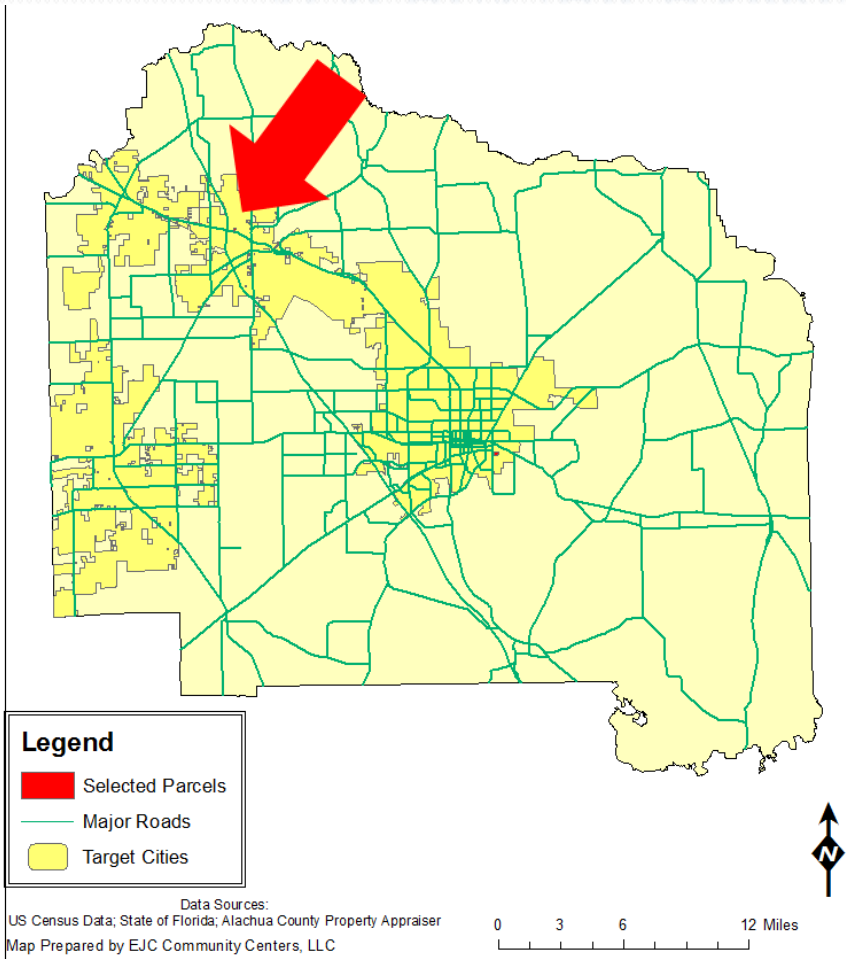
ALACHUA / HIGH SPRINGS

- US Hwy 441/ M. L. King Blvd
- 8.58 Acres
- Current Owner:
National Speleological Society, Inc.



EJC Community Centers

ALACHUA / HIGH SPRINGS



EJC Community Centers

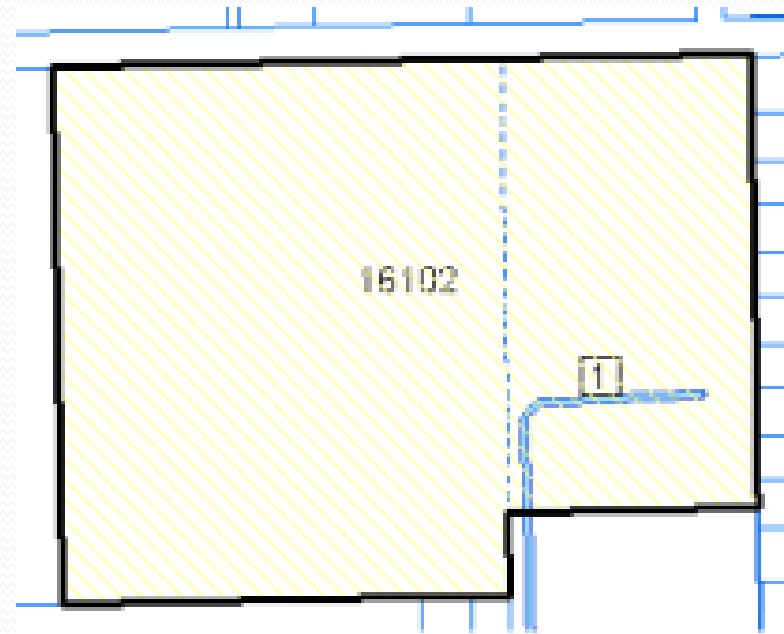
ALACHUA / HIGH SPRINGS



EJC Community Centers

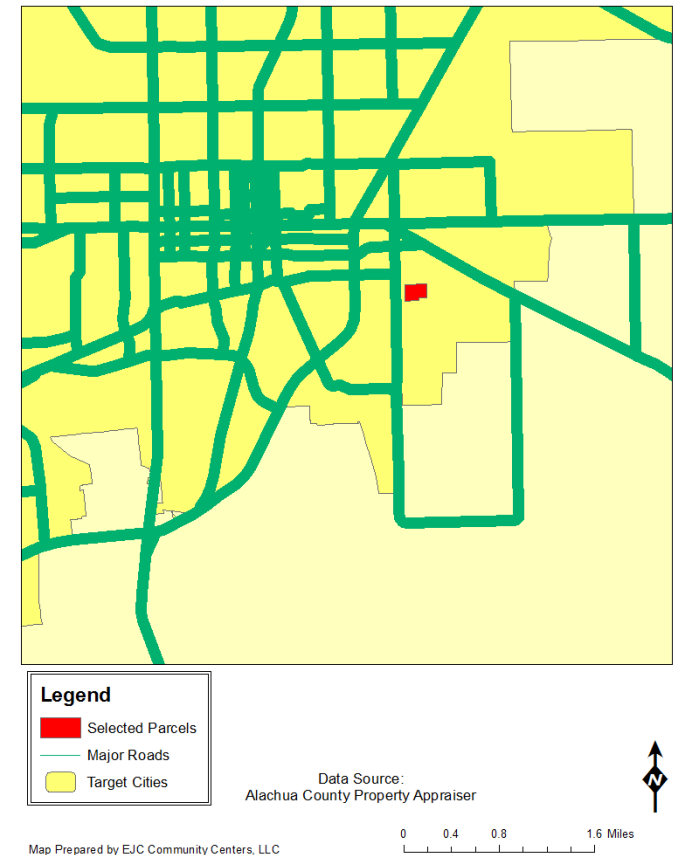
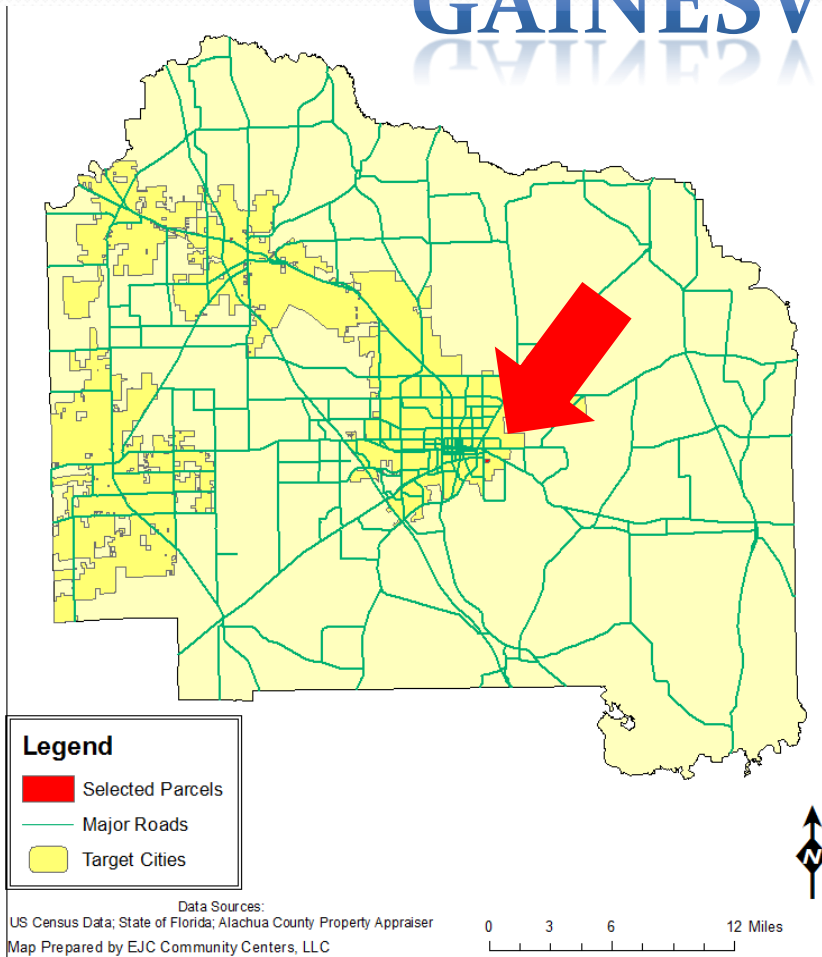
GAINESVILLE

- 1717 SE 8th Ave,
Gainesville, FL.
- 15.09 Acres
- Current Owner:
City of
Gainesville



EJC Community Centers

GAINESVILLE



EJC Community Centers

GAINESVILLE



A group of African children in school uniforms, with one child in the foreground raising their hand. The image is overlaid with a teal wave graphic at the top.

EJC Community Centers

Now we're ready to build! (or, at least make a blueprint...)

Any questions?